

Google Scholar Settings

[About Google Scholar](#)

Google Scholar is a web search tool that focuses on scholarly literature, including peer-reviewed papers, theses, books, preprints, abstracts and technical reports from all broad areas of research. It covers both open access and commercial content.

The Library has enabled its full text holdings on WorldCat and EBSCO (the Library's OpenURL linking service) in Google Scholar. Search results will display the following University of Pretoria Library links in results, when configured correctly:

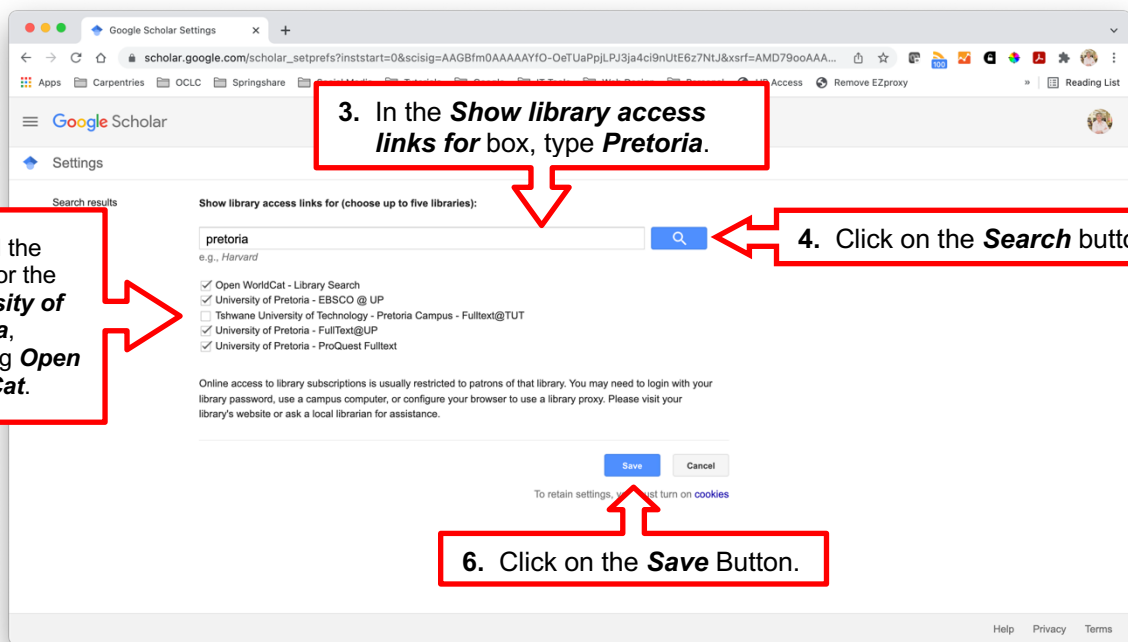
- FullText@UP – Links to the University of Pretoria Library's full text sources through WorldCat.
- EBSCO @ UP – Links to the University of Pretoria Library's full text sources through EBSCO.
- ProQuest Fulltext – Links to the University of Pretoria Library's full text sources through ProQuest.

To enable your computer to find the relevant material on Google Scholar, you will have to make the following changes to your settings for Google Scholar when you are off-campus. On campus users are recognised by their IP and no configuration should be needed.

NOTE: Settings are not transferrable between <https://scholar.google.com/> and <https://scholar.google.co.za/>. Settings are also dependent on browser settings and can "disappear/reset" on its own and it is therefore important to always double check your Google Scholar settings.

Follow this link https://scholar.google.co.za/scholar_settings that will direct you to the Library links settings screen for Google Scholar.

The screenshot shows the Google Scholar Settings page in a browser. The left sidebar has a menu with 'Library links' highlighted. The main content area has a 'Collections' section with two radio buttons: 'Search articles (include patents)' (which is selected) and 'Search case law'. A red callout box with the number '1' points to the selected radio button. Another red callout box with the number '2' points to the 'Library links' menu item. At the bottom of the page, there are 'Save' and 'Cancel' buttons, and a note: 'To retain settings, you must turn on cookies'.



From your search results, choose the relevant links on the right hand side to view the full-text journal articles. Please note that when accessing licensed library resources, from off-campus, users will be prompted to authenticate as library users.

